



1 Dora makes a number on a place value chart.

Th	H	T	O
<div>1,000</div> <div>1,000</div> <div>1,000</div>	<div>100</div> <div>100</div> <div>100</div> <div>100</div>	<div>10</div> <div>10</div>	<div>1</div> <div>1</div> <div>1</div> <div>1</div> <div>1</div>

a) What number has Dora made?

b) Add 3 ones to Dora's number.

What number do you have?

c) Add 2 tens to Dora's number.

What number do you have now?

d) Subtract 2 hundreds from Dora's number.

What number do you have now?

e) Add 5 thousands to Dora's number.

What number do you have now?

2 Complete the calculations.

Use the place value chart to help you.

1,000s	100s	10s	1s
5	3	7	8

a) $5,378 + 200 =$

e) $5,378 - 60 =$

b) $5,378 + 20 =$

f) $5,378 - 3,000 =$

c) $5,378 + 2,000 =$

g) $300 + 5,378 =$

d) $5,378 - 6 =$

h) $5,378 - 300 =$

3 Complete the calculations.

a) $6,058 + 1 =$

b) $6,058 + 20 =$

$6,058 + 2 =$

$6,058 + 30 =$

$6,058 + 3 =$

$6,058 + 40 =$

$6,058 + 4 =$

$6,058 + 50 =$

$5 + 6,058 =$

$60 + 6,058 =$

4 Mo is going to add 100 to each number.

Circle the numbers where the 1,000s will change.

2,450

3,928

4,180

5,905

972

What do you notice?

5 Mr Hall has £1,342 in the bank.

a) Mr Hall puts in £500 more.

How much money does he have in the bank now?



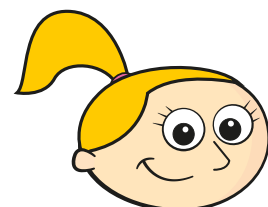
b) Then he puts in £600 more.

How much money does Mr Hall have in the bank now?

c) Then Mr Hall takes out £60

How much money does he have in the bank now?

6 Is Eva correct?



If I keep taking ten away from the number 2,562 only the tens will change.



7 Write the missing numbers.

a) $6,951 - \square = 6,921$ c) $1,706 + \square = 1,766$

$6,951 - \square = 6,881$ $1,706 - \square = 906$

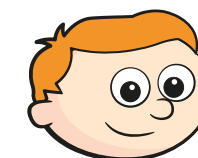
b) $6,421 - 700 = \square$ d) $3,500 - \square = 2,700$

$6,421 + 700 = \square$ $3,500 - \square = 3,430$

Which calculations were easy to work out?

Which were more difficult to work out?

8



To add 3,812 and 1,400 together, you can add 1,000 to 3,812 and then add 400

a) Use Ron's method to work out $3,812 + 1,400$

Could you have worked this out mentally?

b) Use Ron's method to complete the calculations.

$1,780 + 2,200 = \square$

$3,084 + 720 = \square$

$591 + 2,820 = \square$

